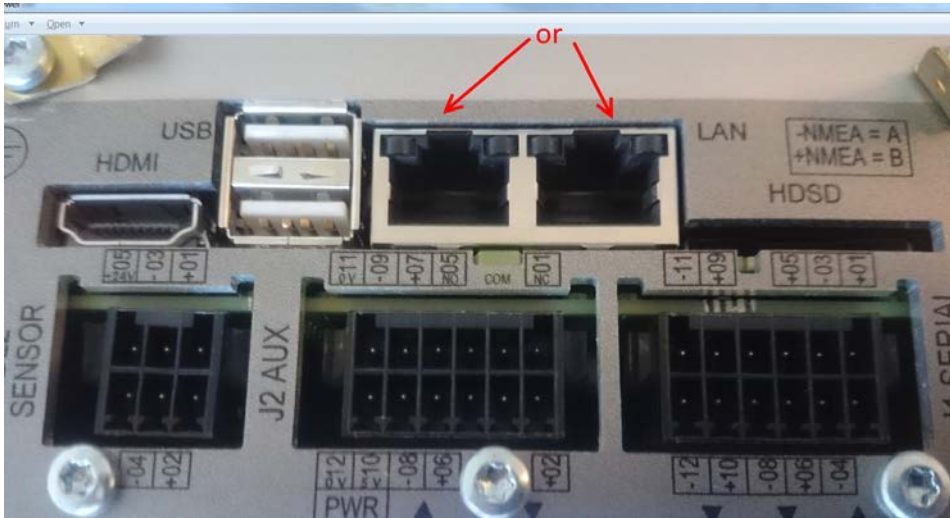
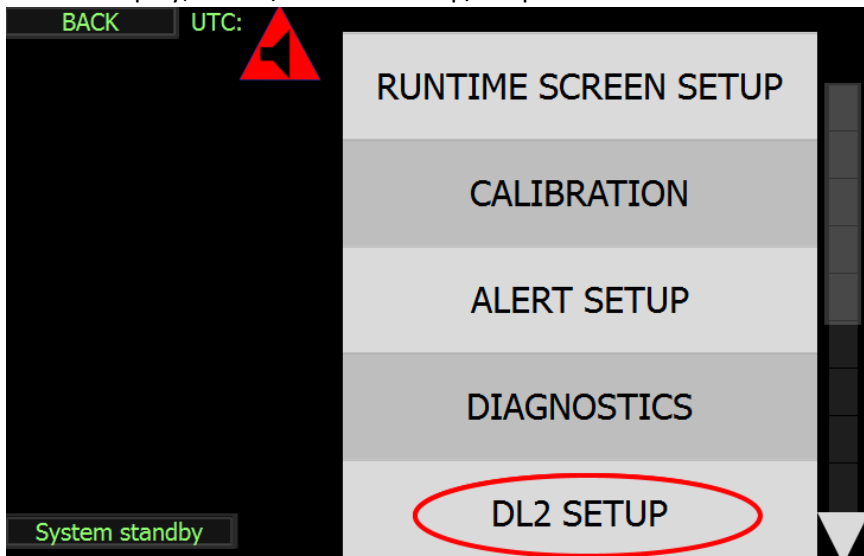


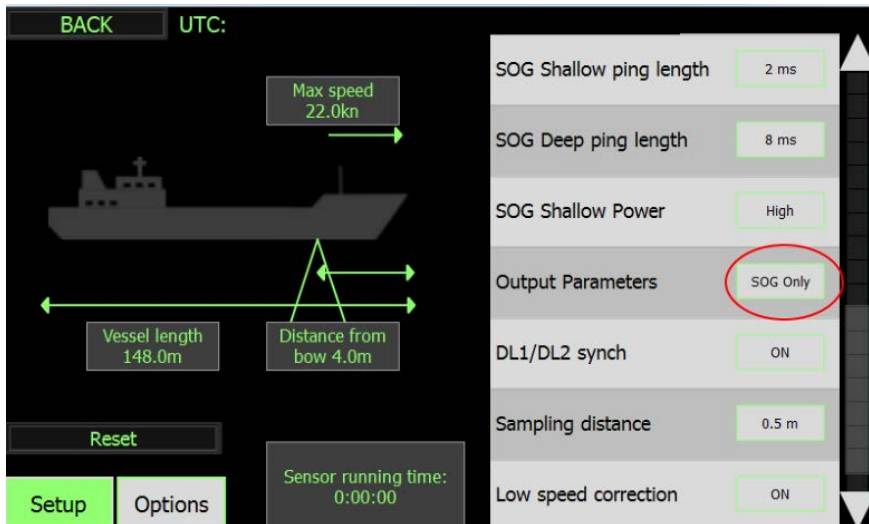
DL1 Trip/Total reset sending commando to DL2

Connect DL2 to your PC via Ethernet

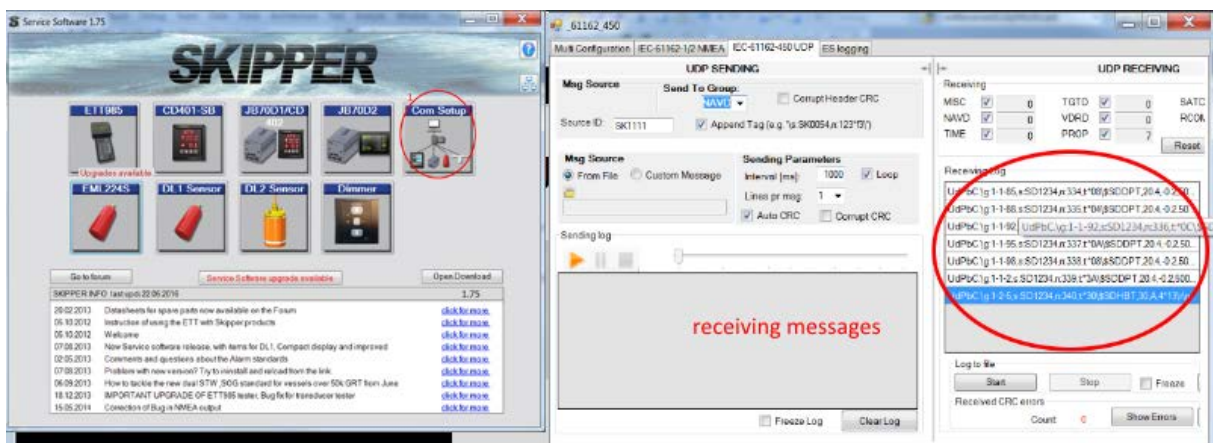


On DL2 display, check / set "DL2 Setup/Output Parameters" to «SOG only

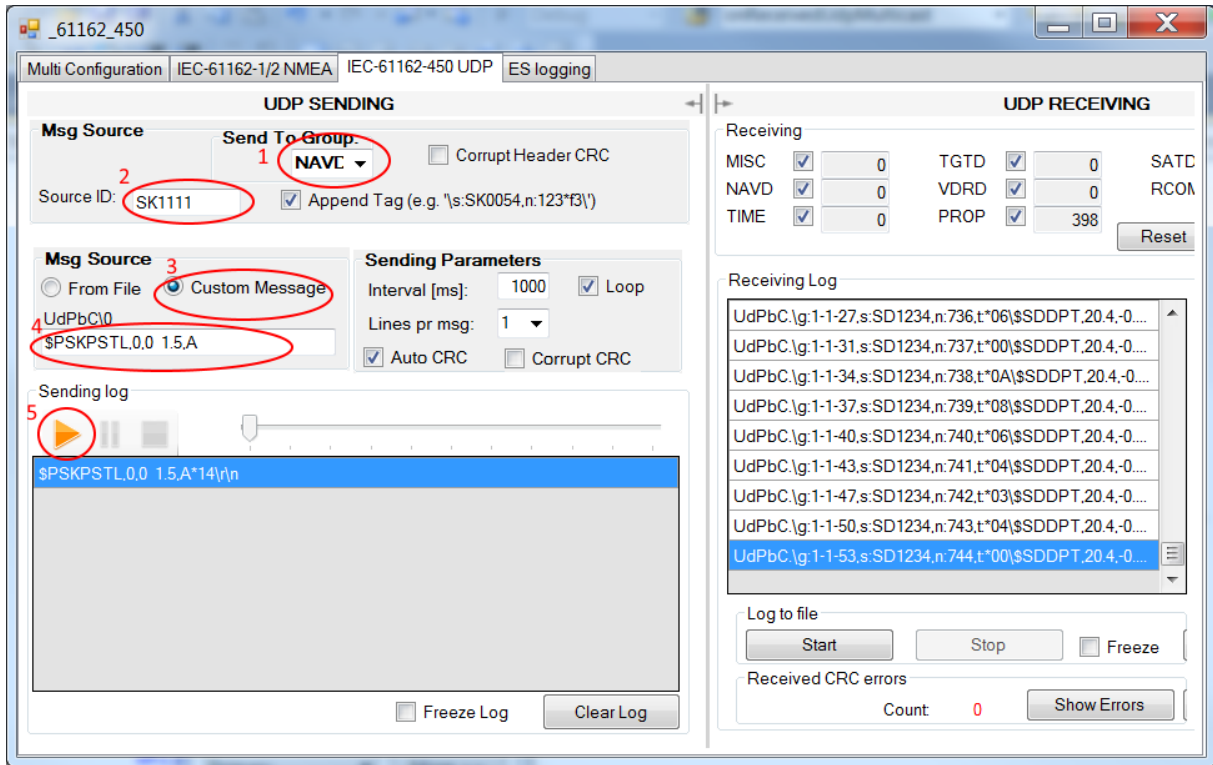




Confirm with Service Software that you are receiving UDP messages



Use Service Software to send command \$PSKPSTL,0,0 1.5,A*14 for set trip and total to zero:



When finished, set back set “DL2 Setup/Output Parameters” if was not on «SOG only»

If UDP multicast is blocked on your PC by firewall or some other program, try to send command \$PSKPSTL,0,0 1.5,A*14 via RS422 to the DL2 input